

**NEXON EV - TECHNICAL SPECIFICATIONS**

<b>Electric Drivetrain</b>	Permanent Magnet Synchronous Motor		
Motor (type)	229*		
Electric motor power (PS)	245*		
Electric motor torque (Nm)	Multi-drive modes (Drive   Sport)		
Drive modes	30.2 kWh High energy density Lithium-ion battery pack		
Battery pack	Liquid cooled		
Thermal management system	IP 67		
Ingress protection for motor and battery pack	9.9		
Acceleration (0-100 kmph in sec)	34%		
Gradeability (%)	Zero tailpipe emission		
Emission	<b>XM</b>	<b>XZ+</b>	<b>XZ+ Lux</b>
<b>Smart Drive Features</b>			
Smart Regenerative Braking	•	•	•
Hill Ascent Assist	•	•	•
Hill Descent Assist	•	•	•
<b>Transmission</b>	Single speed transmission for automatic like drive		
Transmission			
<b>Dimensions and Weight</b>			
Length x Width x Height (mm)	3993 x 1811 x 1606		
Wheelbase (mm)	2498		
Ground clearance (mm) - unladen	205		
Boot space (litre)	350		
Kerb weight (kg)	1400		
<b>Steering</b>	Electrically power assisted		
Steering	5.1		
Turning circle radius (m)			
<b>Brakes</b>	Disc, Drum		
Front, Rear			
<b>Suspension</b>	Independent MacPherson strut with coil spring		
Front Suspension	Twist beam with dual path strut		
Rear Suspension			
<b>Wheels and Tyres</b>	R16 215/60 LRR		
Size	Steel	Alloy	Alloy
Type			
<b>Charging</b>	CCS 2		
Charging standard	8.5* hours		
Estimated regular charging time (SOC 10% to 90% from any 15A plug point)	60* minutes		
Estimated fast charging time (SOC 0%-80%)			
<b>Warranty</b>	8 Year / 1,60,000 km (whichever is earlier)		
Battery pack & motor warranty	3 Year / 1,25,000 km (whichever is earlier)		
Vehicle warranty			
<b>Driving Range and Efficiency</b>	312*		
Certified full charge range (as per MIDC cycle)	100*		
Energy efficiency (Wh/km)			

	<b>XM</b>	<b>XZ+</b>	<b>XZ+ Lux</b>
<b>Exterior</b>			
Projector headlamps with Tri-arrow DRLs	•	•	•
Tri-arrow signature LED tail lamps	•	•	•
Floating roof	•	(Dual tone roof)	(Dual tone roof)
Piano black ORVMs with turn indicators	•	•	•
Roof rails	•	•	•
Door side body cladding for scratch protection	•	•	•
Electric blue accents on humanity line, side beltline, X-Factor	•	•	•
Shark fin antenna	•	•	•
Wheel covers	•	•	•
16" Diamond cut alloy wheels	•	•	•
Body coloured door handles	•	•	•
<b>Comfort and Convenience</b>			
Electric sunroof with tilt-function	•	•	•
Auto headlamps	•	•	•
Rain sensing wipers	•	•	•
Fully automatic temperature control	•	•	•
Rear AC vents	•	•	•
Height adjustable driver seat	•	•	•
Height adjustable front seatbelts	•	•	•
Adjustable rear seat head rest	•	•	•
Remote central lock	•	•	•
Smart key with push-button start (PEPS)	•	•	•

	<b>XM</b>	<b>XZ+</b>	<b>XZ+ Lux</b>
Wearable PEPS key	•	•	•
Power windows (all 4)	•	•	•
Electrically operated ORVM	•	(Auto fold)	(Auto fold)
Fast USB charging port at front	•	•	•
12V front power outlet	•	•	•
12V rear power outlet	•	•	•
Electric tailgate release	•	•	•
Rear wiper and wash system	•	•	•
Boot lamp	•	•	•
<b>Interior</b>			
Tri-arrow themed interiors	•	•	•
Flat bottom steering wheel	•	•	•
Leather wrapped steering wheel	•	•	•
Door trim insert	•	Fabric	Leatherette
Grand central console with front armrest and sliding tambour door	•	•	•
Cup / Can holder on central console	•	•	•
1 Litre bottle holder in all doors	•	•	•
Umbrella holder in front doors	•	•	•
Rear seat central armrest with 2 cup holders	•	•	•
Multi-utility glove box	•	•	•
Cooled and illuminated glove box	•	•	•
Rear seat cushion 100% flip and flat fold	•	60:40 Seat Split	60:40 Seat Split
Seat upholstery	Fabric	Fabric	Premium Leatherette
<b>Car Infotainment</b>			
ConnectNext Infotainment system by Harman™	•	•	•
ConnectNext 7" (17.78 cm) Floating Dash-top touchscreen infotainment by Harman™	•	•	•
8-speaker system by Harman™	4 Speakers	•	•
AM/FM with RDS (RDS - Regional FM/AM station auto tuning)	•	•	•
Bluetooth connectivity	•	•	•
SMS / WhatsApp notifications and read-outs	•	•	•
Apple Car Play and Android Auto	•	•	•
Image and video playback	•	•	•
Steering Mounted Audio, Phone and Voice Controls	•	•	•
What3Words™ address based navigation	•	•	•
<b>Instrument Panel</b>			
7" (17.78 cm) TFT digital instrument cluster with full graphic display	•	•	•
Voice alerts - door open, seatbelt reminder and many more	•	•	•
<b>Safety and Security</b>			
Driver and co-driver airbags	•	•	•
ABS with EBD and CSC	•	•	•
Driver seatbelt with pretensioners, load limiters and crash-locking tongue	•	•	•
Child-safety rear door locks	•	•	•
Follow-me-home headlamps	•	•	•
ISOFIX anchorage points for child-seat	•	•	•
Front fog lamps	•	•	•
Rear defogger	•	•	•
Camera based reverse park assist (with dynamic guideways)	Sensor Only	•	•
<b>35 Smart Connected Features with Tata Motors ZConnect Mobile App</b>			
<b>Safety and Security</b> - Intrusion alert, Stolen vehicle tracking, Panic notification, Remote immobilization etc.	•	•	•
<b>Location Based Services</b> - Find nearest charging and service station, Find my car, Geo-fencing, Time-fencing etc.	•	•	•
<b>Remote Commands</b> - Remote door lock/unlock, Remote cooling, Remote vehicle diagnostics, Remote lights ON/OFF etc.	•	•	•
<b>20+ Vehicle Health Alerts</b>	•	•	•
<b>Trip Analytics and Driver Behaviour Score</b>	•	•	•
<b>Social Tribes</b>	•	•	•

nexonev.tatamotors.com | f /TataMotorsElectricMobility | v /TataMotorsEV | i /tatamotorselectrictatamobility | 📞 1800 209 8282 • STANDARD • NOT AVAILABLE

Images and illustration are indicative and for information purposes only. All features/specifications are not available in all variants and may vary for different variants. Specifications/features subject to change without prior information. Please consult an authorized Tata Motors dealer for latest information on features/specifications before deciding to place an order. Colours may not match the actual colours due to printing limitations. 312 kilometres as per ARAI certification. \*Under test ambient temperature conditions. Terms and conditions apply.



**TATA MOTORS**  
Connecting Aspirations



**NEXON EV** THE ELECTRIC SUV

**DRIVE THE LIGHTNING**



POWERED BY  
**ZIPTRON**

Tata Motors Passenger Vehicle Business Unit,  
Tata Motors Limited, 4th floor Ahura Centre, Mahakali  
Caves Road, MIDC, Andheri (East), Mumbai 400093.

**PEACEFUL DRIVE EXPERIENCE**

Driving range of 312\* km in a single charge in complete silence.

Smart Regenerative Braking helps maintain a healthy state of charge in the battery.

**TRI-ARROW DESIGN THEME**

The futuristic Tri-arrow design is inspired by forward-thinking IMPACT 2.0 design philosophy that makes a statement on the road.

**FLOATING 7" (17.78 cm) HARMAN™ INFOTAINMENT TOUCHSCREEN**

The infotainment system is positioned at eye level and connects you to the world.

**LAYERED DUAL TONE FINISH WITH ELECTRIC BLUE ACCENTS**

The harmonious colour scheme with premium textures makes for the perfect ambience.

**LEATHER WRAPPED FLAT BOTTOM STEERING**

Take charge of the Nexon EV with a firm yet smooth grip to feel the lightning.

**T R U E - B L U E E L E C T R I C S U V**



**TRI-ARROW SIGNATURE LED TAIL LAMPS**

Here's something to admire for those behind you on the road.



**PROJECTOR HEADLAMPS WITH TRI-ARROW DRLs**

Accentuates the headlights for an electrifying presence.



**LIGHTNING STANCE**

16" (40.64 cm) Diamond Cut Alloy Wheels. 205 mm Ground Clearance (unladen).



**7" (17.78 cm) TFT DIGITAL INSTRUMENT CLUSTER WITH FULL GRAPHIC DISPLAY**

Displays key information showing all key vehicle parameters in one glance.



**PREMIUM LEATHERETTE SEATS**

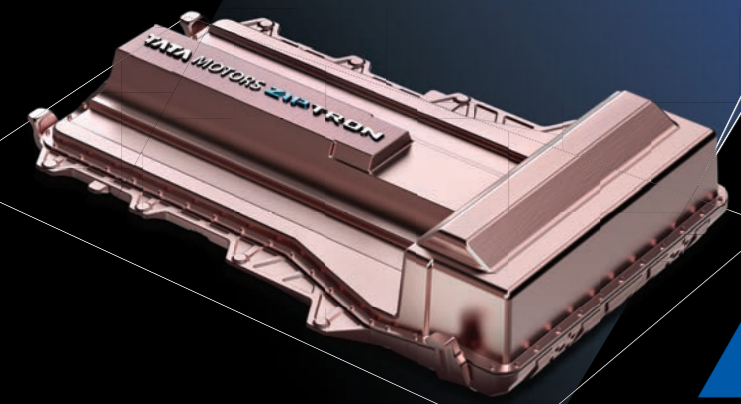
The luxurious leatherette seats are intuitively designed with attention to detail and fine craftsmanship.

**ELECTRIC SUNROOF WITH TILT-FUNCTION**

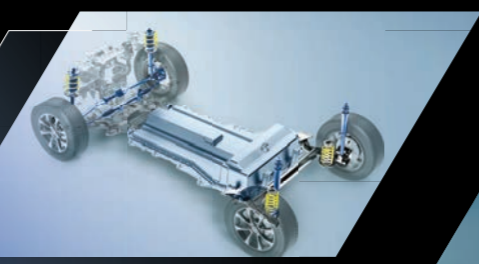
Open up your world as you drive, for the better things in life.



**30.2 kWh Li-ION BATTERY WITH IP 67 CERTIFICATION**  
 Powered by state-of-the-art Ziptron technology, the battery gives you the ability to be lightning quick on the road.



**SUSPENSION**  
 Dual-path strut suspension ensures comfortable ride and handling.

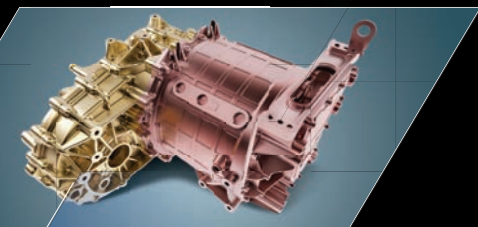


**HILL ASCENT ASSIST AND HILL DESCENT ASSIST**  
 Keeps you in control of the road whether going uphill or downhill.



# PERFORMANCE

**ELECTRIC MOTOR POWER**  
 Experience pure, unadulterated electric performance with peak output of 129 PS\* and torque of 245 Nm\*.



**CHARGING**  
 When you drive the lightning, the charging ought to be fast too.  
 Fast charges in just 60\* minutes.

And for convenience there is the option of regular charging from any 15 A plug point.  
 Charges in 8.5\* hours.

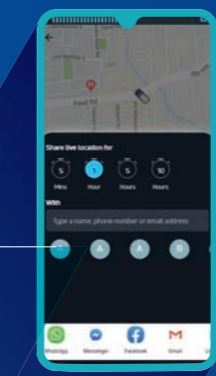
Comes with an onboard AC charger of 3.3 kW.



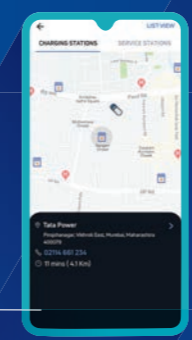
**REMOTE COMMAND**  
 Control your Nexon EV from anywhere.



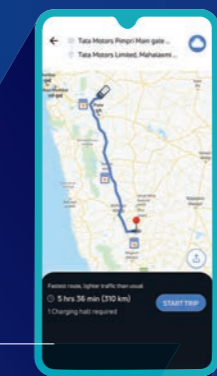
**ONE-CLICK TRACKER**  
 Know where your Nexon EV is parked when it is difficult to locate.



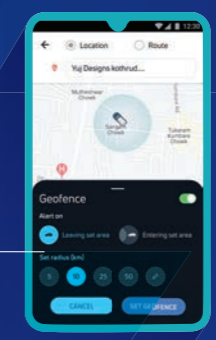
**CHARGING STATION LOCATOR**  
 Know the location of your nearest charging station, always.



**NAVIGATE YOUR WAY**  
 Travel with the Nexon EV's efficient navigation map and get information about charging stations on the go.



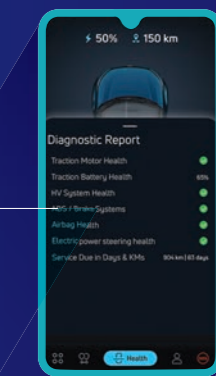
**GEO-FENCING**  
 You can receive an alert and can track your Nexon EV if it crosses a secure radius.



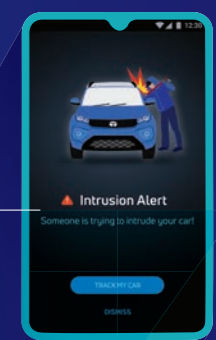
# TECHNOLOGY

ZCONNECT APP WITH 35 CONNECTED CAR FEATURES ACROSS ALL THREE VARIANTS

**REMOTE DIAGNOSTICS**  
 Get a detailed and holistic health report of the car's battery, motor and other critical functions.



**INTRUSION ALERT**  
 Get instant notification alerts in case of unauthorized access into your Nexon EV.





**MULTI-DRIVE MODE: DRIVE | SPORT**  
You can either choose the Drive Mode or experience 60% additional torque in the Sport Mode.



**REAR AC VENT**  
Because rear seat passengers shouldn't miss out on the experience of lightning fast cooling.



**AUTOMATIC CLIMATE CONTROL**  
Standard across variants, it gives you complete control of the temperature inside your Nexon EV.



**GRAND FLOOR CONSOLE WITH TAMBOUR DOOR**  
A console that enhances cabin aesthetics and provides smart storage options as well.



**COOLED GLOVE BOX**  
Keep things fresh and cooled with this multi-utility storage unit.



**BOOT SPACE**  
350 liters boot space that's expandable up to 690 litres with a 60:40 rear seat split.

## COMFORT AND CONVENIENCE



**CABIN COMFORT**  
Enjoy a noiseless drive in a spacious and comfortable cabin.

**CENTRAL ARMRESTS**  
Ensure comfort is on your side, when you get on the road for those long drives - at both the front and the rear.



**ABS WITH EBD AND CSC**  
The Anti-lock Braking System with Electronic Brake-force Distribution and Cornering Stability Control gives you absolute control to take charge of the road.



**CAMERA BASED REVERSE PARK ASSIST (WITH DYNAMIC GUIDEWAYS)**  
Hassle-free parking, always. The live camera-feed is your dynamic guideway when you put your Nexon EV in reverse.

## SAFETY



**DUAL FRONT AIRBAGS**  
Dual front airbags as standard across all three variants.



**ISOFIX AS STANDARD**  
Get absolute protection for your child with the ISOFIX child-seat mount.



**FORTIFIED CABIN**  
The high-strength reinforced steel structure protects the passenger cabin by absorbing impact energy, thus ensuring you are always protected.